



nectre®

N350 | N550
Bakers Oven
Radiant / Convection Wood Cook Stoves





The Nectre brand has developed a reputation over the past 30 years as an honest, reliable and robust range of products. Supported by an innovative development team to ensure the brand remains a market leader with low emissions and high efficiency.

Australian owned and operated since 1978, Pecan Engineering is proud of its rich history and tradition.

Member of



Traditionally Styled



nectre



The N550 Bakers Oven is designed to suit any living space and provides excellent cooking features both with a stove top and a robust oven that can handle a roast, pizza or breads. The compact firebox is capable of heating spacious living spaces.

Optional water boiler installation further adds to the N550 and makes it an excellent choice as a sustainable living appliance.

N550 Bakers Oven

Residual Heat Output	2000 -2500 /SF
BTU's per hour	65,000 (approx)
Top Exit Flue Size	6"
Efficiency rating	78%
Wood length	20"



The Nectre N350 Bakers Oven provides excellent warmth and cooking performance. With a small footprint it fits in just about any living space without being intrusive. A radiant heat cook top with two removable rings provides an excellent cooking option, while the oven is large enough for pizzas, breads and roasts.

N350 Bakers Oven

Residual Heat Output 750-1000 /SF
BTU's per hour 30,000 (approx)
Top Exit Flue Size 6"
Efficiency rating 78%
Wood length 14"

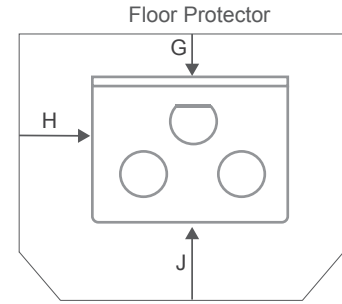
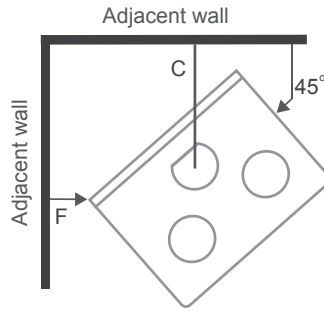
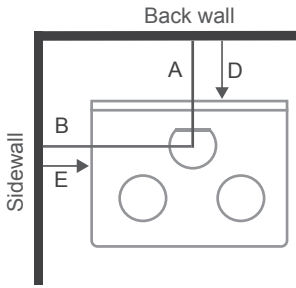
Designed to be versatile



nectre.

Clearance for N350 & N550

Hearth (floor protection)



Residential installation for Standard Clearance's

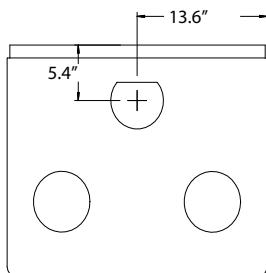
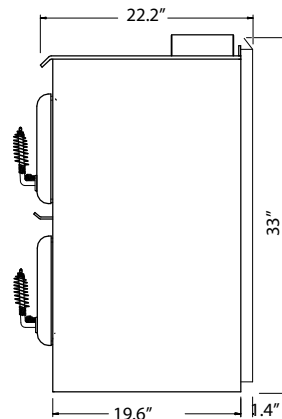
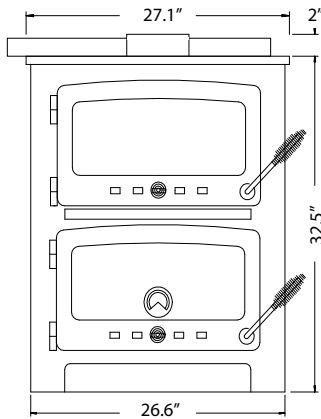
	N350	N550
A	10.5"	12.5"
B	18"	22.5"
C	15"	15"
D	8"	10"
E	10"	12"
F	6.5"	5"

N350 & N550

H = 8" | G = 8" | J = 18"

Floor protector must be a 1" minimum thickness, non-combustible material (having an equal or better insulating value (lower k Value) of $k = .84 \text{ BTU/In Ft}^2 \text{ Hr } ^\circ\text{F}$ must extend beneath heater and to the front/sides/rear indicated.

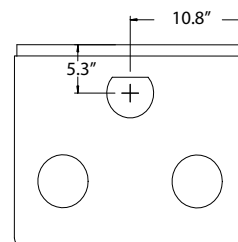
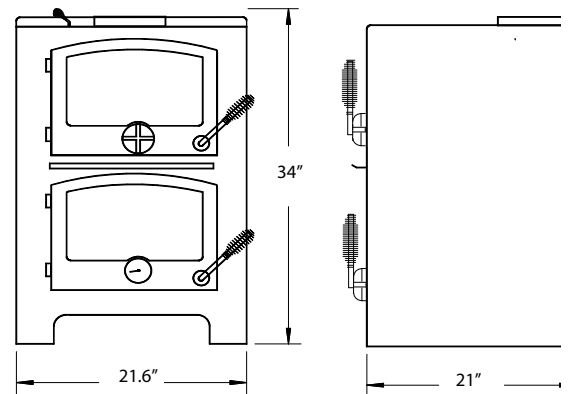
N550 Dimensions



Internal Dimensions

	Firebox	Oven
	18.7" (w)	18.0"
	11.4" (d)	12.6"
	11.8" (h)	9.8"

N350 Dimensions



Internal Dimension

	Firebox	Oven
	18.7" (w)	18.0"
	11.4" (d)	12.6"
	11.8" (h)	9.8"

Tested to
UL 1482-2011
ULC S627-00



6" diameter, double-wall, minimum 24 MSG black or 25 MSG blued steel connector pipe with factory-built chimney listed to either UL 103HT or ULC S629. The minimum clearance from top of the appliance to the ceiling is 51"

EPA - Standards of Performance for New Residential Wood Heaters, New Residential Hydronic Heaters and Forced-Air Furnaces.

Subpart AAA – Standards of Performance for New Residential Wood Heaters

Section 60.530 (b) (4) Cook stoves as defined in Section 60.531 are exempt from the applicable emission limits of Section 60.532 and the requirements of Section 60.533.

Features & Benefits



N350 Stay Cool flue by-pass dampener spring handle.



N350 & N550 each come with Trays and 3 Steel Racks



N350 & N550 both have 2 removable cook rings for added versatility.



N350 & N550 have a oven temperature thermometer in the glass door.



N350 & N550 have a "Stay Cool" spring handle.



N550 "Easy Start" air control slide allows for greater fire control.



N550 Flue by-pass dampener handle.



N350 & N550 are made with cast iron doors and ceramic glass.

N350

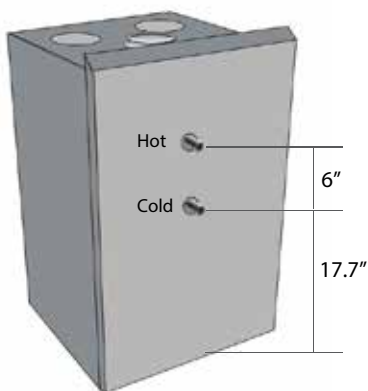
Heat Output	30,000 BTU's/hr
Residual Heat Output.....	750-1000 S/F
Weight	350 lbs
Construction	Steel 1/4" & 5/16"
Stove racks	3
Maximum Log	14"
Firebox Volume	2.4 cu.ft
Top Flue Size	6"
Efficiency Rating	78%
5" Cook rings	2

N550

Heat Output	65,000 BTU's/hr
Residual Heat Output.....	2000-2500 S/F
Weight	550 lbs
Construction	Steel 1/4" & 5/16"
Stove racks	3
Maximum Log	20"
Firebox Volume	2.7 cu.ft
Top Flue Size	6"
Efficiency Rating	78%
5" Cook rings	2



Nectre for Hot Water



Hot Water Booster Option

A wet back, hot water jacket, water booster are all pretty much the same thing. Nectre water booster is manufactured from certified boiler grade stainless steel and holds (on average) 0.26 gallon of water. It is installed at the rear of the firebox and when the fire is operating, water passes through the booster which is heated.

The Nectre water booster designed only for low pressure and can not be connected to mains pressure hot water systems. The average hot water jacket will heat up to 8000 to 17,000 BTU of water.



**VERMONT
WOODSTOVE**

Optional Heat Retention with Soapstone.

Both the N350 and N550 can be externally lined with Soapstone. Soapstone has excellent heatretaining and conducting properties. Its high specific heat capacity makes soapstone a unique but extremely effective material for use in fireplaces.



US Authorised Agent

Vermont Marble, Granite, Slate & Soapstone Co.

10014 State Route 4, Whitehall, NY 12887

P- 802.468.8800 | F- 802.419.8233

Find us on



nectre.com



Manufactured by Pecan Engineering Pty Limited
13 Acorn Road, Dry Creek, South Australia 5094
Ph: +61 8 8349 3322 | Email: info@pecan-eng.com.au

Nectre is a registered trade mark of Pecan Engineering Pty Limited.
All rights reserved. Copyright protected 2017©